

Improving Older People's Services in North West Glasgow

Catriona Renfrew

Director Planning and Policy

October 2015

Agenda for today

Presentation:

- Why Change – Clinical Services Strategy
- Older People's Pathway
- Our proposals

Listening to you:

- Discussion on options and issues

Clinical Services Strategy

- Developed over a 2 year period
 - 2012 to 2014
 - Overarching patient reference group
- Focus on 8 themes of healthcare
 - Each supported by Patient Reference Group
 - Working groups with patient involvement
 - Voluntary organisation involvement

Older People's Services

Clinical Services Strategy set out future models of care for Older People's Services:-

- people stay in hospital only for acute care
- Maximise rehabilitation
- Supported return to community is the focus
- Develop wider range of community services

Older People's Services

- Extensive engagement including carers organisations, older people's forums and Public Partnership Forums.
- What we heard:-
 - Need for greater coordination of services.
 - Improvement in planning discharge from hospital.
 - Need for highest quality specialist care in hospital.
 - Better support people to return home from hospital as soon as possible.

Older People's Services

Established evidence based principles to underpin our models of care:-

- Early intervention from specialists in the care of older people focussed on frailty assessment
- Rapid commencement of multi-disciplinary assessment and rehabilitation with fast access to the full range of investigations and specialist advice.
- Early planning for the transfer of care from hospital to community services, involving all appropriate people.

Proposals

To improve Older People's services for North West Glasgow by making changes to services currently delivered on the Drumchapel site.

- Transferring two rehabilitation wards, with associated day hospital, outpatient and X Ray services to Gartnavel General hospital from Drumchapel site.
- Relocating current NHS continuing care from Drumchapel to other suitable locations across North and West Glasgow.

Proposals

Early intervention from specialists in the care of older people focussed on frailty assessment

- Drumchapel services delivered by ‘visiting’ consultants
- Consultant Geriatricians based on-site at Gartnavel
- Improved access to 24/7 medical care within a larger hospital,
 - will enable better management of acute episodes,
 - reduce the need for transfer to another acute hospital site

Proposals

Early intervention from specialists in the care of older people focussed on frailty assessment

- improve recovery time
- Proximity provides much better access to specialist expertise including Pharmacy, Orthotics and Community outpatient allied health professionals

Proposals

Rapid commencement of multi-disciplinary assessment and rehabilitation within facilities that enable fast access to the full range of investigations and specialist advice

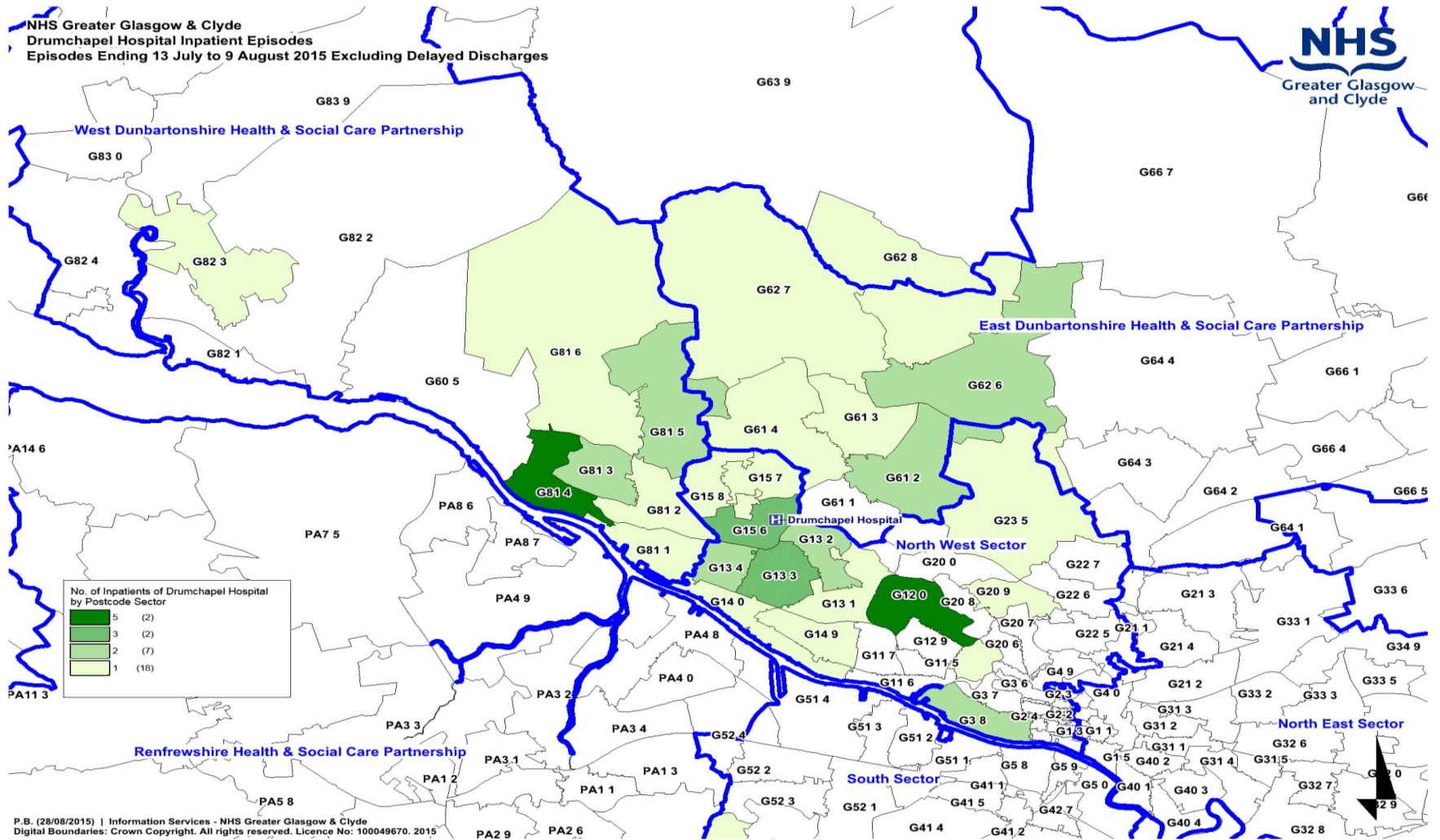
- Facilities at Drumchapel are limited and not provided 24/7
- Gartnavel has full range of diagnostic interventions
- Multi-disciplinary teams based at Gartnavel General Hospital
- Patients will receive more extensive input from specialists in Rehabilitation across the full range of Nursing and Allied Health professionals using specialist facilities which are located within or close to the wards
- Patients less likely to need to travel to another hospital for investigations

Proposals

Early planning for the transfer care from hospital to community services involving all appropriate people.

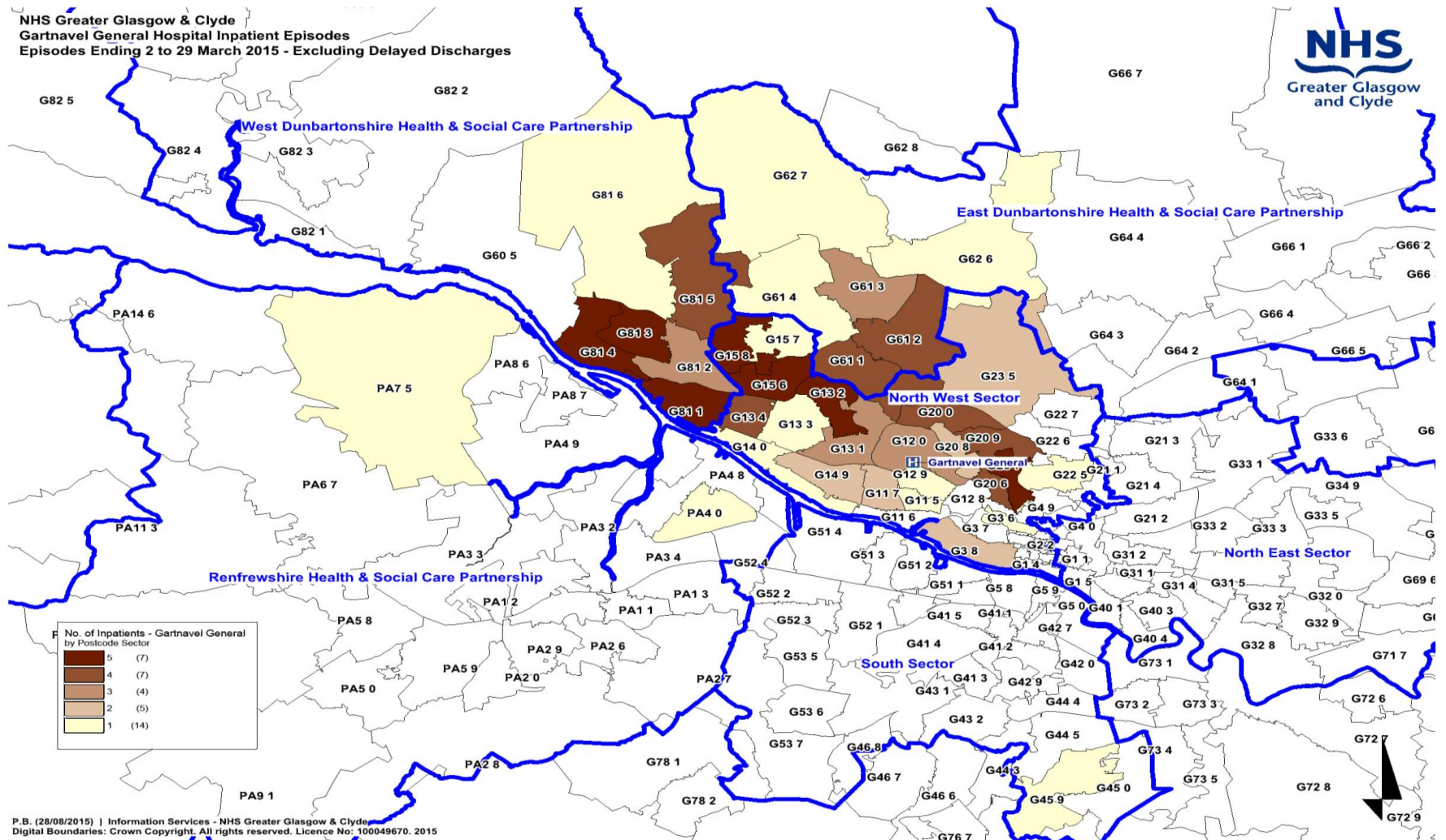
- Gartnavel General Hospital has a high volume of patients that generates regular engagement with community, social and other appropriate services – these links will assist in supporting rapid discharge back to the community
- Concentration of the expertise, experience and knowledge will assist in focussing inpatient care on the acute episode to ensure patients are able to return to the community at the earliest opportunity

Postcode Catchment of Inpatients at Drumchapel



Postcode Catchment of Inpatients at Gartnavel General Hospital

NHS Greater Glasgow & Clyde
 Gartnavel General Hospital Inpatient Episodes
 Episodes Ending 2 to 29 March 2015 - Excluding Delayed Discharges



Engagement: Involving You

Our responsibilities are to:

- Inform
 - advise of proposals
 - Establish Stakeholder Reference Group
- Engage
 - Share draft information widely and encourage feedback
 - Engagement Event
- Consult
 - Put forward background and proposals widely
 - Consultation Event

The Purpose of this Event

- Present early thinking
- Encourage questions and discuss options
- Capture viewpoints and comments
- Encourage discussion
- Test our thinking and information materials

Over to You

- What do you think of our proposals?
 - What are the pro's?
 - What are the con's?
 - What are the concerns?
- What other options would allow us to meet our service model principles?
- Any other issues, thoughts or concerns?

Next Steps

- October
 - continue to engage
 - Record all feedback from today and other forums
- November
 - Prepare and distribute consultation document outlining proposals
 - Consultation Event