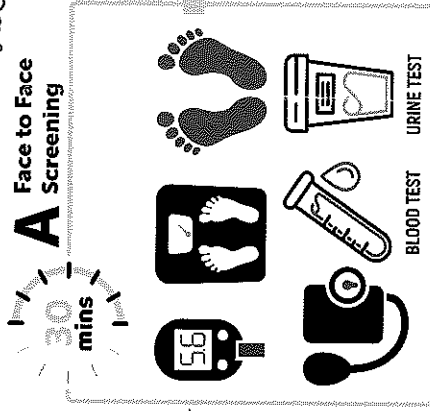
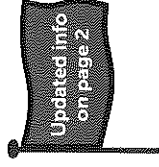
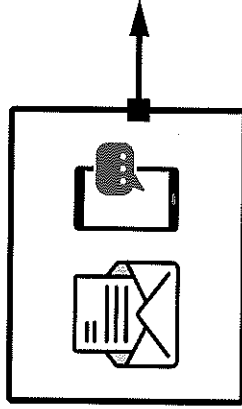


TYPE 1 DIABETES

New Appointments System

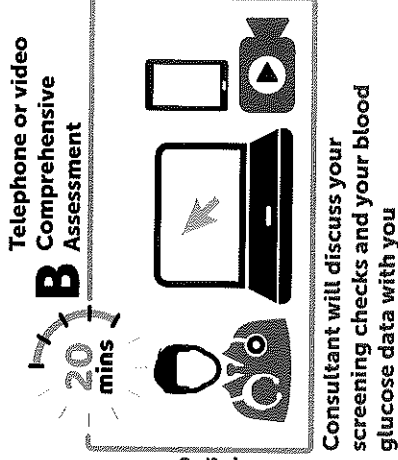


A healthcare assistant will perform all your screening checks



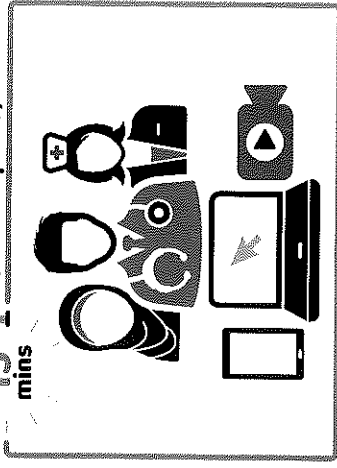
Once a year you will receive a pair of dates 2 weeks apart for appointments A and B

Two
Weeks
later



Consultant will discuss your screening checks and your blood glucose data with you

C. Telephone or video
Interim Review
(when required)



SK SOUTH HUB T1 DIABCA TEL

Type 1 diabetes - Explanation of infographic

New Appointments System for Review with Consultant

This leaflet provides information on the hospital type 1 diabetes service for people who attended Gartnavel, QEUH and Victoria clinics. The QEUA clinic has moved to the Victoria and the combined new service is called the south Glasgow diabetes hub. Your contact with us will be by telephone or video calls but in specific situations face to face consultant review can be arranged.

For your once per year screening, you will receive a pair of appointments about 2 weeks apart.

- The first (A in the diagram) is a face to face visit for measurements and samples only.
- The second (B in the diagram) is a telephone or video discussion with your consultant.

Your screening checks (visit A) will be performed by a team of healthcare assistants. This will take about 30 minutes. Your appointment with the consultant (visit B) will happen about 2 weeks after the screening tests are done, so the results can be discussed with you and a plan agreed.

The appointment with the consultant will be by telephone or video call and will last about 20 minutes.

We encourage you to reflect on your diabetes priorities and goals before the consultant review so that you can get the most out of the conversation. You can view your screening check history on My Diabetes My Way, if you don't already.

We also encourage you to upload your glucose data before the consultant review. Many of you already do this from home, but you will have the chance to upload it during the screening (visit A) if you cannot upload at home.

You will need to bring all your BG meters with you if you want to upload at the screening visit. If you use Libre, please ensure data is up to date on Libreview and linked to your clinic before your consultant review. Pump users should also upload before consultant review (visit B). Details or help with uploading can be obtained by contacting your local type 1 diabetes hub by email (see below).

- Some people will need an interim appointment between their yearly checks but not everyone will need this (C in the diagram). The consultant will discuss this with you.

The diabetes nurses and dietitians have also adapted to offer more telephone and video support. If you need to contact your diabetes team for clinical advice you can email:

- Diabetes Nurse contact for people with type 1 diabetes who attend the south Glasgow diabetes hub at the Victoria
✉ ggc.southglasgowdiabeteshub@nhs.scot
☎ 0141 347 8279
- Diabetes Nurse contact for people who attend Gartnavel type 1 diabetes clinic
✉ ggc.northwestglasgowdiabeteshub@nhs.scot
☎ 0141 211 3136
- Diabetes Dietitian contact for both Gartnavel and Victoria type 1 diabetes clinics
✉ dmdietitians.south@ggc.scot.nhs.uk

Appointments will be sent out in batches only 6 weeks ahead. For queries on diabetes appointments or to change appointments please follow the instructions on your appointment letter.