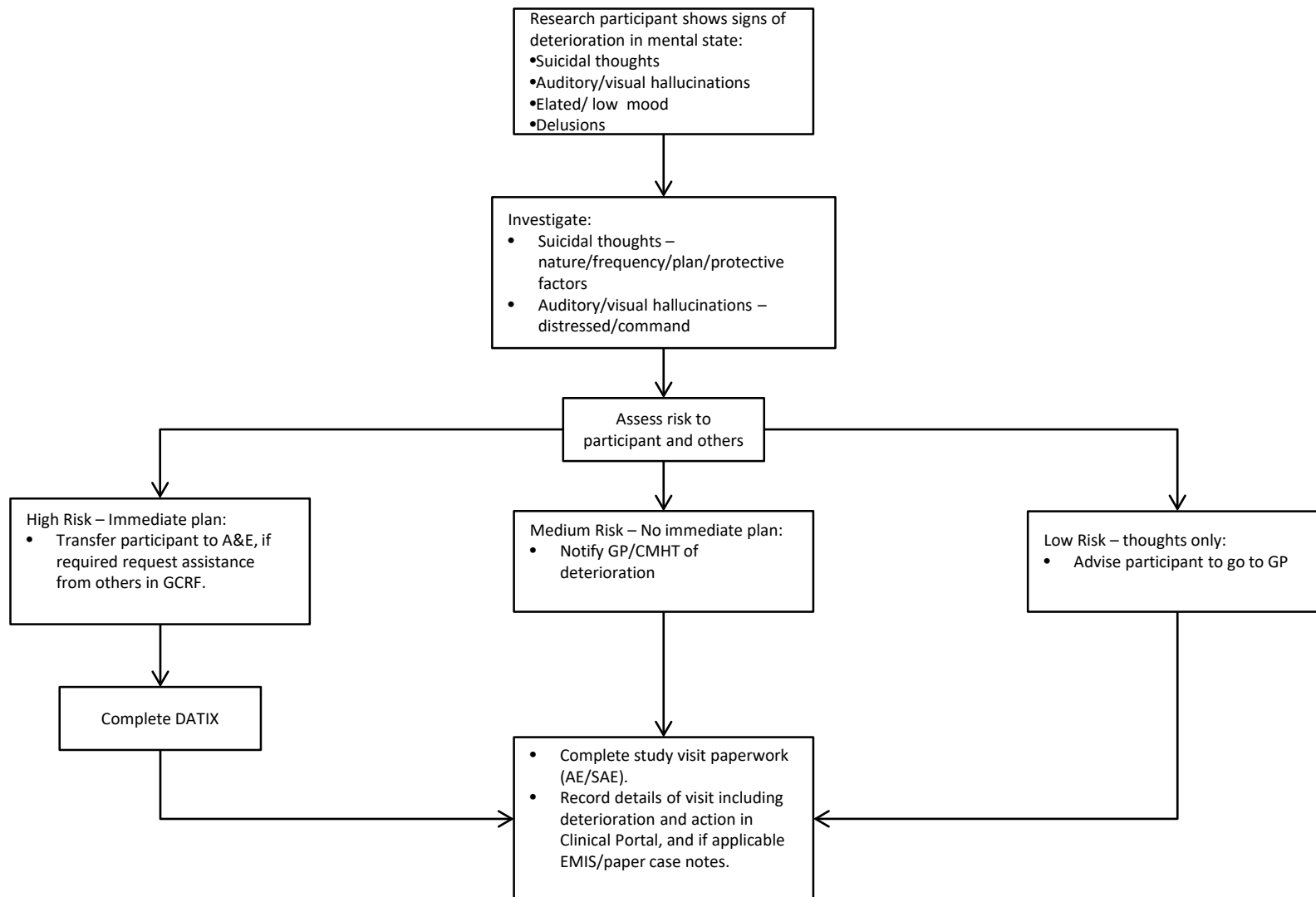


Guideline number	17.001B	Version	2.0
Title	Psychiatric Emergency		



Document history

Version	Date	Description
1.0	27/02/2018	Creation of Guidance document
2.0	18/08/2023	Update to Guideline template v1.0 Change of author and approver

Guideline signatories

Prepared by Signature	Rachel Kerr Date
Approved by Signature	Lynn Prentice Date

This Guideline is a controlled document. The current version can be viewed on the GCTU website.
Any copy reproduced from the website may not, at time of reading, be the current version.