

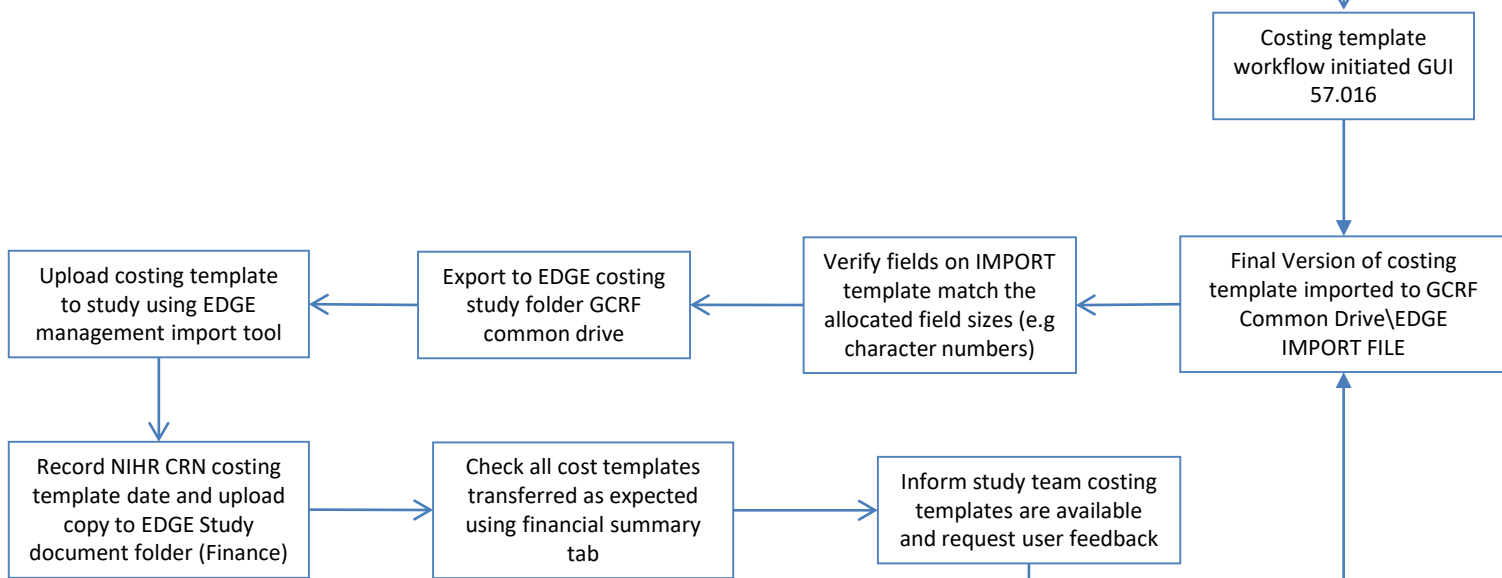
Glasgow Clinical Trials Unit

Guideline number	57.016C	Version	1.0
Title	Importing commercial costing templates		

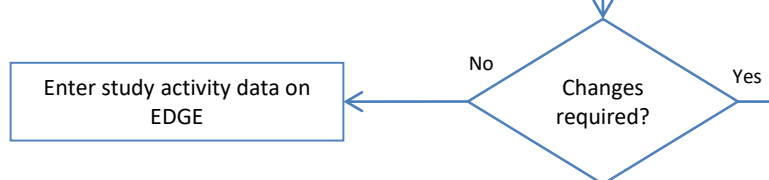
Commercial R&I
Coordinator



GCRF Information Manager



Study Team



Guideline signatories

Prepared by Signature	Kirsty McAinsh	Date
Approved by Signature	Lynn Prentice	Date

Document history

Version	Date	Description
1.0	02/08/2023	First release

This Guideline is a controlled document. The current version can be viewed on the GCTU website.
Any copy reproduced from the website may not, at time of reading, be the current version.